

29/62

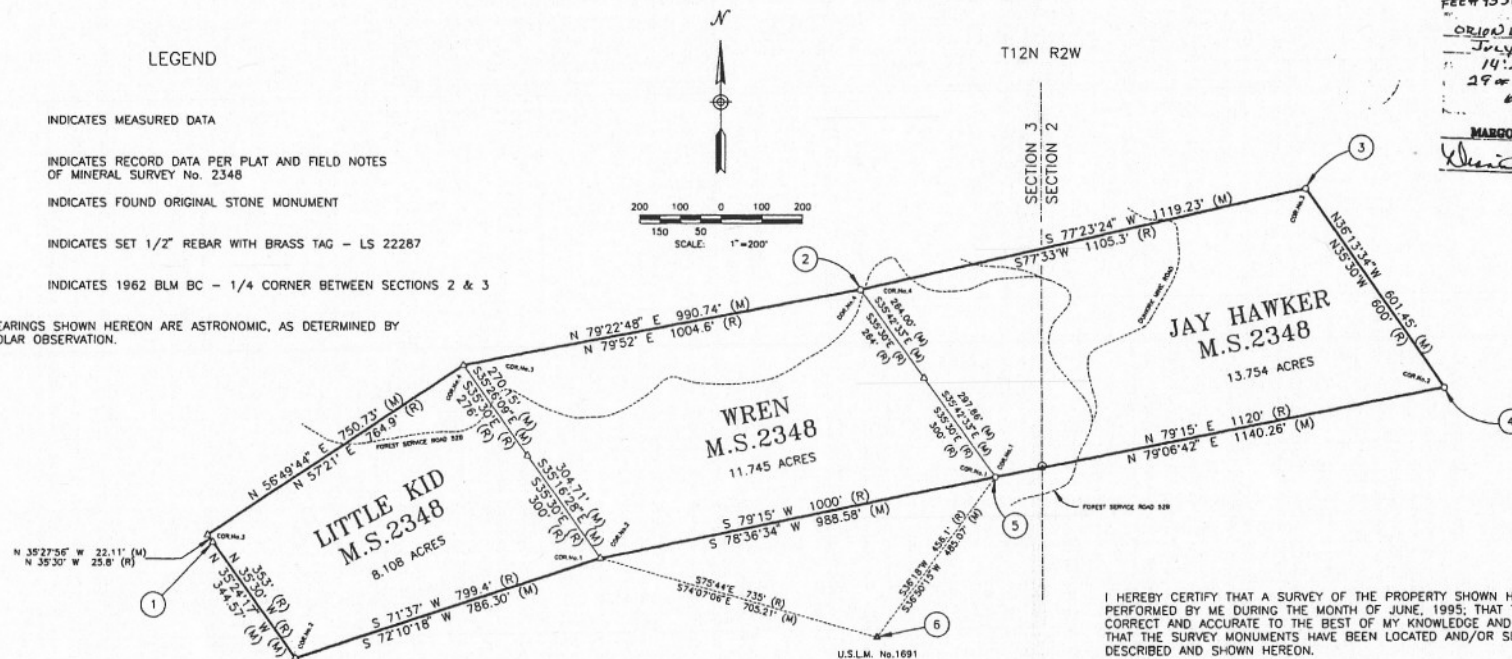
RECORD OF SURVEY

THE LITTLE KID, WREN, AND JAYHAWKER PATENTED MINING CLAIMS,
MINERAL SURVEY No.2348, LOCATED IN THE HASSAYAMPA MINING DISTRICT,
IN SECTIONS 2 AND 3, T 12 N, R 2 W, G. & S.R.M.,
YAVAPAI COUNTY, ARIZONA

LEGEND

- (M) INDICATES MEASURED DATA
- (R) INDICATES RECORD DATA PER PLAT AND FIELD NOTES OF MINERAL SURVEY No. 2348
- △ INDICATES FOUND ORIGINAL STONE MONUMENT
- INDICATES SET 1/2" REBAR WITH BRASS TAG - LS 22287
- ⊙ INDICATES 1962 BLM BC - 1/4 CORNER BETWEEN SECTIONS 2 & 3

BEARINGS SHOWN HEREON ARE ASTRONOMIC, AS DETERMINED BY SOLAR OBSERVATION.



FE# 1536906
ORION LAND SURVEYING
July 24, 1995
14:20
29th Land Surveys
62
MARGO W. CARSON
Surveyor

NOTES

- ① THE NORTH CENTER END OF THE NI WOT MILLSITE LODE, M.S. 1691. FOUND ORIGINAL STONE IN PLACE.
- ② FOUND NO REMAINING EVIDENCE OF THIS CORNER OR IT'S ACCESSORIES. I REESTABLISHED SAME AT RECORD DISTANCE (264') FROM THE EAST CENTER END OF THE WREN LODE, ON A LINE BETWEEN CORNER No.1 OF THE WREN AND THE EAST CENTER END OF THE WREN.
- ③ FOUND NO REMAINING EVIDENCE OF THIS CORNER OR IT'S ACCESSORIES. I REESTABLISHED SAME BY A COMPASS RULE ADJUSTMENT BETWEEN CORNER No.4 AND CORNER No.2 OF THE JAY HAWKER LODE.
- ④ I REESTABLISHED THIS CORNER AT RECORD BEARING AND DISTANCE FROM A BEARING ROCK IN PLACE, WHICH BEARS S27°20'W, 9.90'.
- ⑤ I REESTABLISHED THIS CORNER FROM TWO EXISTING BEARING ROCKS IN PLACE, ONE OF WHICH BEARS S54°43'49"E, 18.49' (S66°10'E, 18.6' - RECORD), AND THE OTHER OF WHICH BEARS N84°35'14"W, 12.33' (N86°25'W, 12.6' - RECORD). THE 1/4 CORNER BETWEEN SECTIONS 2 AND 3, T12N R2W, A BLM BRASS CAP, BEARS N76°44'56"E, 117.94'.
- ⑥ I ALSO FOUND TWO BEARING ROCKS IN PLACE, ONE OF WHICH BEARS S72°43'06"W, 20.13' (S73°20'W, 20.5' - RECORD), AND THE OTHER OF WHICH BEARS N19°24'16"E, 37.03' (N16°38'E, 37.2' - RECORD).

I HEREBY CERTIFY THAT A SURVEY OF THE PROPERTY SHOWN HEREON WAS PERFORMED BY ME DURING THE MONTH OF JUNE, 1995, THAT THE MAP IS CORRECT AND ACCURATE TO THE BEST OF MY KNOWLEDGE AND BELIEF, AND THAT THE SURVEY MONUMENTS HAVE BEEN LOCATED AND/OR SET AS DESCRIBED AND SHOWN HEREON.

Robert L. Weaver
ROBERT L. WEAVER
REGISTERED LAND SURVEYOR
CERTIFICATE NO. 22287
7-24-95
STATE OF ARIZONA, U.S.A.
LS 22287

	ORION LAND SURVEYING		
	2897 N. HIGHLAND DRIVE PRESCOTT VALLEY, AZ 86314 (520) 772-5991		
DATE 7-7-95	DRAWN RLV	CHECKED DKG	JOB NO. 505022